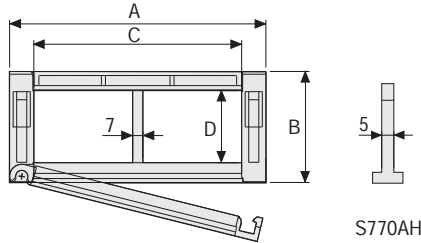


# Serie Medium

## SR770A Nylon Cable Chain with openable frames

### Inner height (D) 60 mm

Double share Sideband & Frame construction with large anti-friction single-pin. Frames openable from inner radius. As standard the chain comes with frames every second link, on request with frames every link. Vertical and horizontal modular separator system is available.



### Separator

- Unassembled Part.no S770A
- Assembled Part.no S770AMC

### Strong-hold separator

for C > 200 mm

- Unassembled Part.no S770AH
- Assembled Part.no S770AHMC

### Pin

Part.no PG770

### Technical characteristics when self-supported

Speed	6 m/s
Acceleration	30 m/s <sup>2</sup>

For higher requirements please consult our technical dept.

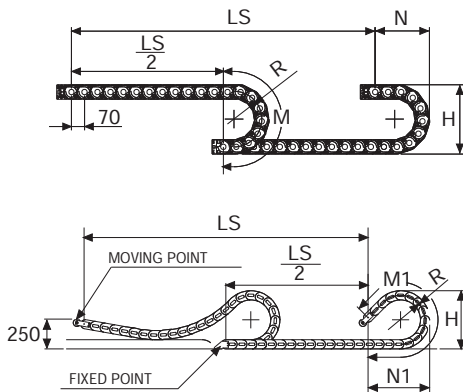
For sliding applications, technical data can slightly change according to frequency, added weight and environment.

A	B	C	D	R	Weight/m	Chain
mm	mm	mm	mm	mm	kg	Part Number
80	78	45	60	150-200-250-300	2,25	SR770A045□□□*
91	78	56	60	150-200-250-300	2,25	SR770A056□□□*
105	78	70	60	150-200-250-300	2,31	SR770A070□□□*
111	78	76	60	150-200-250-300	2,32	SR770A076□□□*
125	78	90	60	150-200-250-300	2,36	SR770A090□□□*
130	78	95	60	150-200-250-300	2,36	SR770A095□□□*
137	78	102	60	150-200-250-300	2,38	SR770A102□□□*
147	78	112	60	150-200-250-300	2,39	SR770A112□□□*
155	78	120	60	150-200-250-300	2,43	SR770A120□□□*
166	78	131	60	150-200-250-300	2,46	SR770A131□□□*
180	78	145	60	150-200-250-300	2,49	SR770A145□□□*
205	78	170	60	150-200-250-300	2,55	SR770A170□□□*
230	78	195	60	150-200-250-300	2,62	SR770A195□□□*
241	78	206	60	150-200-250-300	2,65	SR770A206□□□*
255	78	220	60	150-200-250-300	2,68	SR770A220□□□*
282	78	247	60	150-200-250-300	2,75	SR770A247□□□*
291	78	256	60	150-200-250-300	2,77	SR770A256□□□*
342	78	307	60	150-200-250-300	2,88	SR770A307□□□*
364	78	329	60	150-200-250-300	2,94	SR770A329□□□*
392	78	357	60	150-200-250-300	3,01	SR770A357□□□*

\*Complete the code by inserting the value of the radius (R): Ex. SR770A045 □ □ □ □ □

Chain equipped with nylon frame every pitch: complete the code by inserting the letter D.

Ex. SR770A045150 □ □



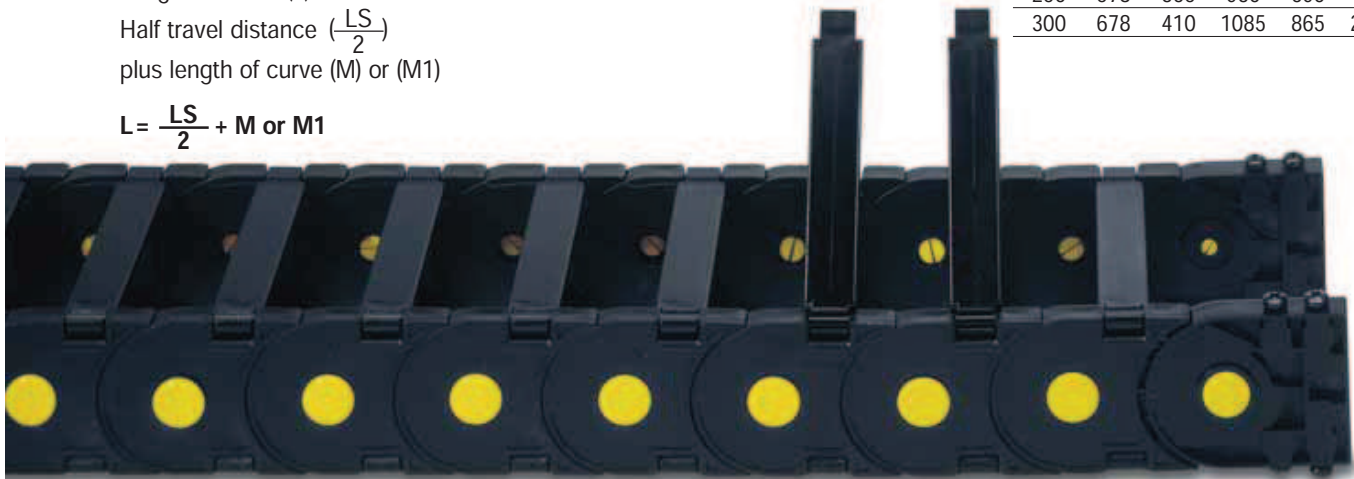
Length of chain (L)

Half travel distance ( $\frac{LS}{2}$ )

plus length of curve (M) or (M1)

$$L = \frac{LS}{2} + M \text{ or } M1$$

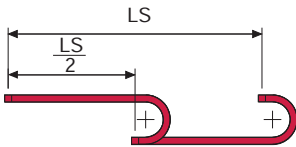
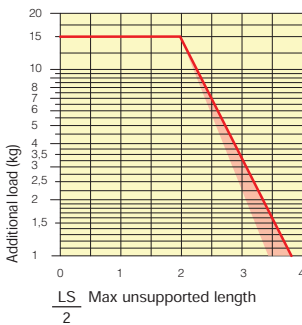
R	H	N	M	N1	M1
mm	mm	mm	mm	mm	mm
150	378	260	615	340	785
200	478	310	770	515	1220
250	578	365	930	690	1660
300	678	410	1085	865	2095



Version with frames mounted on every pitch.

### Self-Supporting Capacity Diagram

The maximum length of the self-supporting capacity ( $\frac{LS}{2}$ ) in relationship to the weight of the cables and hoses contained per linear metre.



The red marking in the diagram area considers the difference of weight between various widths of chains assembled with nylon frames every second pitch.

For applications with  $\frac{LS}{2}$  and weights not included in the area of the diagram showing self-supporting capacity, verify the possible use of support rollers (see page 30).

### End Brackets

The end brackets set allows the two ends of the chain to be attached to the equipment.

#### Nylon Type

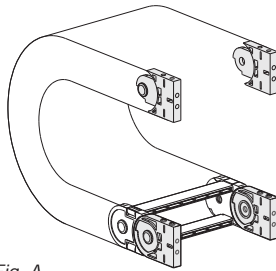
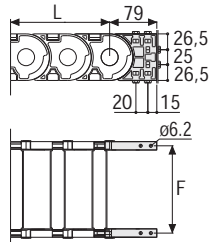


Fig. A  
The chain can be fixed frontally, inner or outer radius. (Fig A)  
See end brackets mounting variations page 31.



Chain Type	F mm
SR770A045	61
SR770A056	72
SR770A070	86
SR770A076	92
SR770A090	106
SR770A095	111
SR770A102	118
SR770A112	128
SR770A120	136
SR770A131	147
SR770A145	161
SR770A170	186
SR770A195	211
SR770A206	222
SR770A220	236
SR770A247	263
SR770A256	272
SR770A307	323
SR770A329	345
SR770A357	373

#### Nylon Type Part Numbers

Complete Set Assembled Chain	End Brackets
Type	Set
SR770A...	AN770AKM

Complete Set Unassembled Chain	End Brackets
Type	Set
SR770A...	AN770AK

Tiewrap Clamp Chain	Tiewrap Clamp
Type	Part Number
SR770A...	CFC770A □□□*

\* Complete the code by inserting the value of the quote C.

#### Bright Zinc Plated Steel Type\*

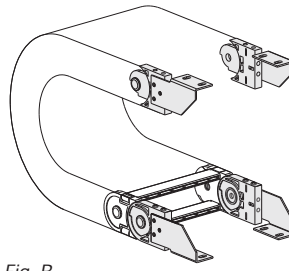
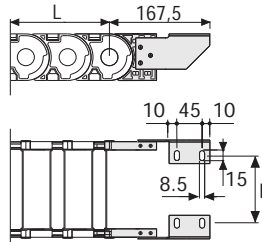


Fig. B  
Chain fixed outside the radius. (Fig B)  
See end brackets mounting variations page 31.



Chain Type	F mm
SR770A045	19
SR770A056	30
SR770A070	44
SR770A076	50
SR770A090	64
SR770A095	69
SR770A102	76
SR770A112	86
SR770A120	94
SR770A131	105
SR770A145	119
SR770A170	144
SR770A195	169
SR770A206	180
SR770A220	194
SR770A247	221
SR770A256	230
SR770A307	281
SR770A329	303
SR770A357	331

#### Bright Zinc Plated Steel Type Part Numbers

Complete Set Assembled Chain	End Brackets
Type	Set
SR770A...	A770AKM □**

Complete Set Unassembled Chain	End Brackets
Type	Set
SR770A...	A770AK □**

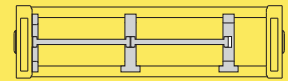
\*Available on request in stainless steel  
\*\* 1=Pos.1; 2=Pos.2; 3=Pos.3

See end brackets mounting variations page 31

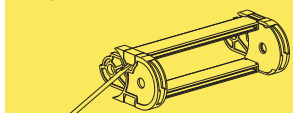
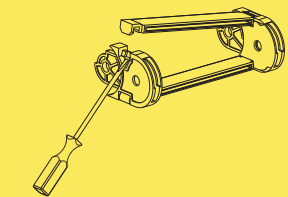
### Serie Medium

## SR770A

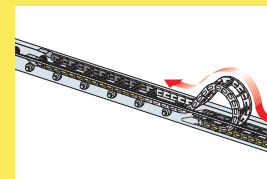
Nylon Cable Chain with openable frames



Separation System  
To choose the separators see page. 174



How to open the cover.



Suitable to long travel distance in frame every pitch version. To choose the guide channel see page 158

Special tool to remove the connecting pivots: Part Number PZ010.



For further information please consult Brevetti Stendaito's Technical Office

