

Serie Medium

SR435MI/SR435ME

Nylon Cable Chain with openable frames

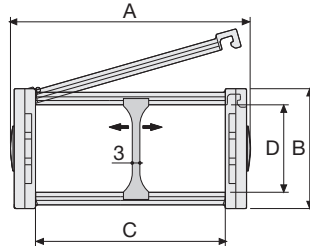
Inner height (D) 35 mm

Sideband & Frame construction with large anti-friction single-pin.

Frames openable from inner radius (SR435MI) or from outer radius (SR435ME).

Vertical separators are available.

This standard 35 mm chain offers very high load capacities, despite its compact construction.



Separator

- Unassembled	Part.no S4353
- Assembled	Part.no S4353MC

Pin

Part.no PG4353

Technical characteristics when self-supported

Speed	10 m/s
Acceleration	50 m/s ²

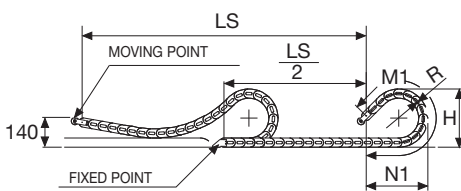
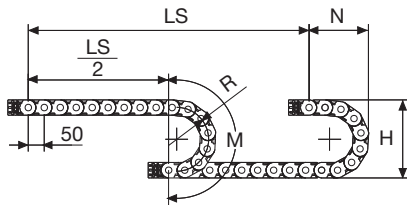
For higher requirements please consult our technical dept.

For sliding applications, technical data can slightly change according to frequency, added weight and environment.

A	B	C	D	R	Weight/m	Chain
mm	mm	mm	mm	mm	kg	Part Number
60	49	40	35	060-075-100-125-150-200	1,10	SR435MI(ME)040□□□*
70	49	50	35	060-075-100-125-150-200	1,15	SR435MI(ME)050□□□*
80	49	60	35	060-075-100-125-150-200	1,20	SR435MI(ME)060□□□*
96	49	76	35	060-075-100-125-150-200	1,30	SR435MI(ME)076□□□*
123	49	103	35	060-075-100-125-150-200	1,45	SR435MI(ME)103□□□*
145	49	125	35	060-075-100-125-150-200	1,55	SR435MI(ME)125□□□*
170	49	150	35	060-075-100-125-150-200	1,70	SR435MI(ME)150□□□*

*Complete the code by inserting the value of the radius (R): Ex. SR435MI(ME)040 □ □ □ □

R	H	N	M	N1	M1
mm	mm	mm	mm	mm	mm
060	169	135	290	165	345
075	199	155	340	190	420
100	249	175	415	230	530
125	299	200	495	320	750
150	349	230	575	405	970
200	449	275	730	580	1405

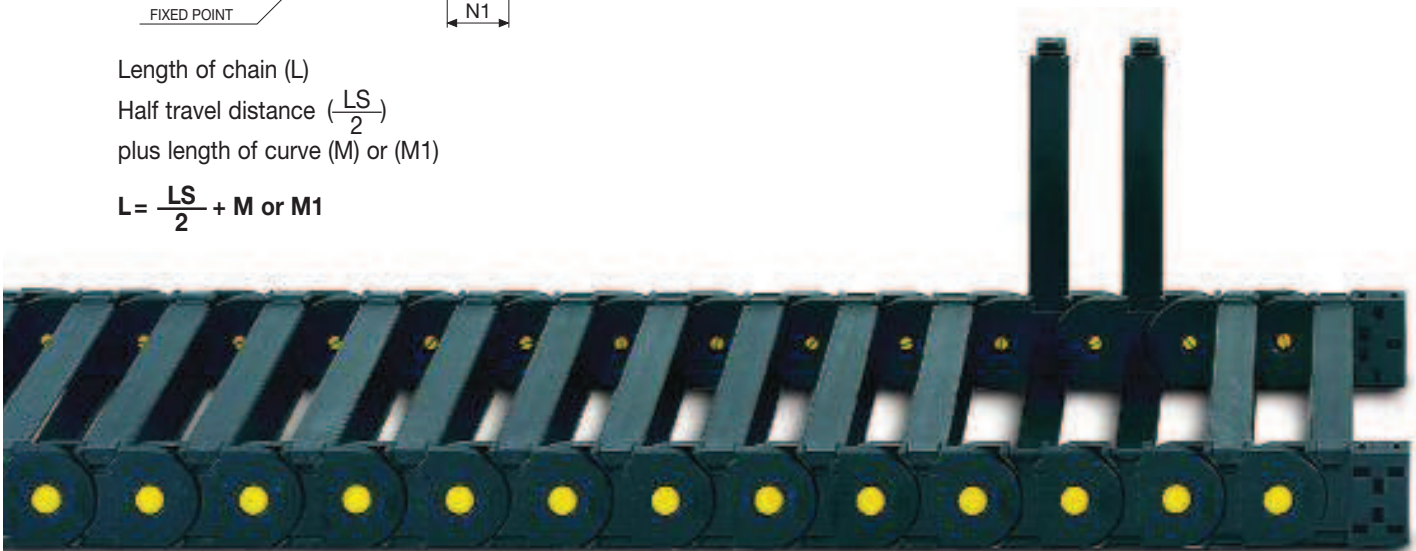


Length of chain (L)

Half travel distance ($\frac{LS}{2}$)

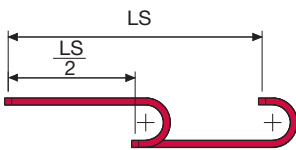
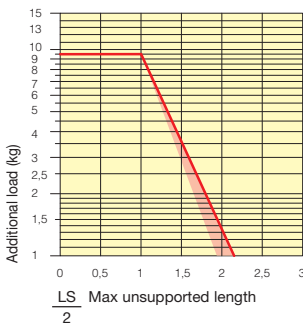
plus length of curve (M) or (M1)

$$L = \frac{LS}{2} + M \text{ or } M1$$



Self-Supporting Capacity Diagram

The maximum length of the self-supporting capacity ($\frac{LS}{2}$) in relationship to the weight of the cables and hoses contained per linear metre.



The red marking in the diagram area considers the difference of weight between various widths of chain.

For applications with $\frac{LS}{2}$ and weights not included in the area of the diagram showing self-supporting capacity, verify the possible use of support rollers (see page 30).

End Brackets

The end brackets set allows the two ends of the chain to be attached to the equipment. Set complete with tiewrap clamps available on request.

Nylon Type

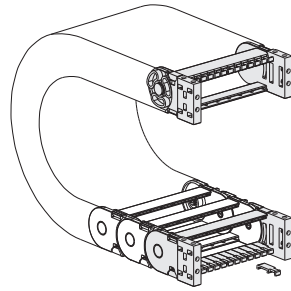
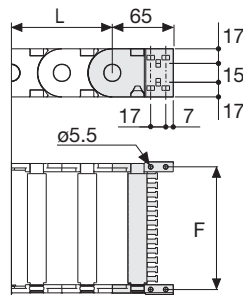


Fig. A
The chain can be fixed frontally, inner or outer radius. (Fig A)



Chain Type	F mm
SR435MI(ME)040	51
SR435MI(ME)050	61
SR435MI(ME)060	71
SR435MI(ME)076	87
SR435MI(ME)103	114
SR435MI(ME)125	136
SR435MI(ME)150	161

Nylon Type Part Numbers

Complete Set Assembled	Chain	End Brackets
Type	Set	
SR435...	AN435M	□□□*KM

Complete Set Unassembled	Chain	End Brackets
Type	Set	
SR435...	AN435M	□□□*K

Tiewrap Clamp

Part Number
Assembl. SFC435M □□□*KM
Unassembl. SFC435M □□□*K

* Complete the code by inserting the value of the quote C.

Bright Zinc Plated Steel Type*

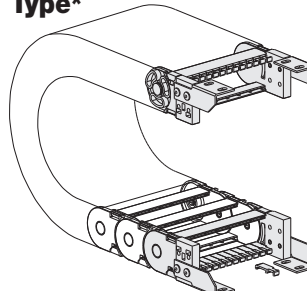
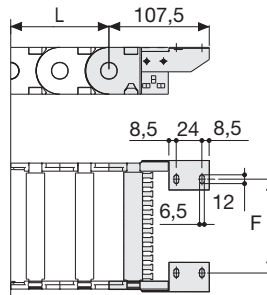


Fig. B
Chain fixed outside the radius. (Fig B)
See end brackets mounting variations page 31.



Chain Type	F mm
SR435MI(ME)040	30
SR435MI(ME)050	40
SR435MI(ME)060	50
SR435MI(ME)076	66
SR435MI(ME)103	93
SR435MI(ME)125	115
SR435MI(ME)150	140

Bright Zinc Plated Steel Type Part Numbers

Complete Set Assembled	Chain	End Brackets
Type	Set	
SR435...	A435M	□□□KM □**

Complete Set Unassembled	Chain	End Brackets
Type	Set	
SR435...	A435M	□□□K □**

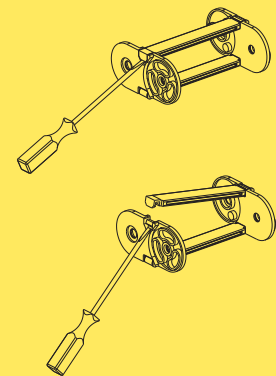
*Available on request in stainless steel
** 1=Pos.1; 2=Pos.2; 3=Pos.3
See end brackets mounting variations page 31.

Serie Medium

SR435MI

SR435ME

Nylon Cable Chain with openable frames



How to open the cover.



Suitable to long travel distance. To choose the guide channel see page 80

Special tool to remove the connecting pivots: Part Number PZ010.

For further information please consult Brevetti Stendalto's Technical Office