

Serie Protection

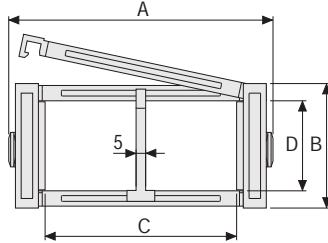
SR475PI/SR475PE Nylon Protection Cable Chain with openable covers

Inner height (D) 75,5 mm

Sideband & Frame construction with large anti-friction single-pin.

Covers are openable from inner radius (475PI) or from outer radius (475PE).

Vertical and horizontal modular separator system is available.



Separator

- Unassembled	Part.no S309S
- Assembled	Part.no S309SMC

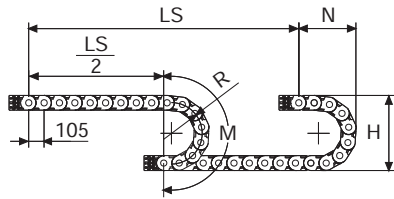
Pin

Part.no PG475

Technical characteristics when self-supported

Speed	8 m/s
Acceleration	40 m/s ²

For higher requirements please consult our technical dept.



Length of chain (L)

Half travel distance ($\frac{LS}{2}$)
plus length of curve (M)

$$L = \frac{LS}{2} + M$$

A	B	C	D	R	Weight/m	Chain
mm	mm	mm	mm	mm	kg	Part Number
112	100,5	74	75,5	180-200-250-300-350-400	4,60	SR475PI(PE)074□□□*
132	100,5	94	75,5	180-200-250-300-350-400	4,80	SR475PI(PE)094□□□*
157	100,5	119	75,5	180-200-250-300-350-400	5,10	SR475PI(PE)119□□□*
164	100,5	126	75,5	180-200-250-300-350-400	5,15	SR475PI(PE)126□□□*
187	100,5	149	75,5	180-200-250-300-350-400	5,40	SR475PI(PE)149□□□*
227	100,5	189	75,5	180-200-250-300-350-400	5,80	SR475PI(PE)189□□□*
262	100,5	224	75,5	180-200-250-300-350-400	6,20	SR475PI(PE)224□□□*
288	100,5	250	75,5	180-200-250-300-350-400	6,50	SR475PI(PE)250□□□*
312	100,5	274	75,5	180-200-250-300-350-400	6,75	SR475PI(PE)274□□□*
338	100,5	300	75,5	180-200-250-300-350-400	7,05	SR475PI(PE)300□□□*
362	100,5	324	75,5	180-200-250-300-350-400	7,30	SR475PI(PE)324□□□*
388	100,5	350	75,5	180-200-250-300-350-400	7,55	SR475PI(PE)350□□□*
412	100,5	374	75,5	180-200-250-300-350-400	7,85	SR475PI(PE)374□□□*
536	100,5	498	75,5	180-200-250-300-350-400	9,20	SR475PI(PE)498□□□*

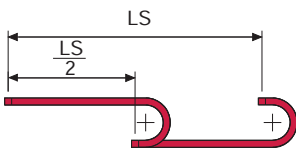
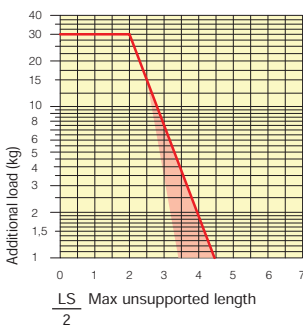
*Complete the code by inserting the value of the radius (R): Ex. SR475PI(PE)119 □□□□

R	H	N	M
mm	mm	mm	mm
180	460,5	335	775
200	500,5	355	840
250	600,5	405	995
300	700,5	460	1155
350	800,5	505	1310
400	900,5	560	1470



Self-Supporting Capacity Diagram

The maximum length of the self-supporting capacity ($\frac{LS}{2}$) in relationship to the weight of the cables and hoses contained per linear metre.



The red marking in the diagram area considers the difference of weight between various widths of chain.

For applications with $\frac{LS}{2}$ and weights not included in the area of the diagram showing self-supporting capacity, verify the possible use of support rollers (see page 30).

Bright Zinc Plated Steel End Brackets*

The end brackets set allows the two ends of the chain to be attached to the equipment.

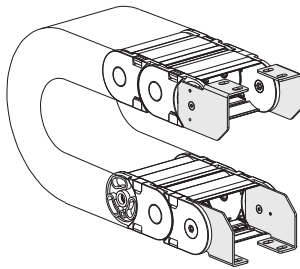
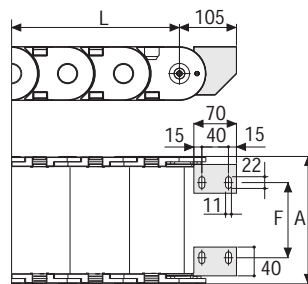


Fig. A
Chain fixed outside the radius. (Fig A)
See end brackets mounting variations page 31.



Chain Type	F mm
SR475PI(PE)074	35
SR475PI(PE)094	55
SR475PI(PE)119	80
SR475PI(PE)126	87
SR475PI(PE)149	110
SR475PI(PE)189	150
SR475PI(PE)224	185
SR475PI(PE)250	211
SR475PI(PE)274	235
SR475PI(PE)300	261
SR475PI(PE)324	285
SR475PI(PE)350	311
SR475PI(PE)374	335
SR475PI(PE)498	459

Bright Zinc Plated Steel Type Part Numbers

Complete Set Assembled Chain Type	Assembled End Brackets Set
SR475...	A475P□□□KM□**

Complete Set Unassembled Chain Type	Unassembled End Brackets Set
SR475...	A475P□□□K□**

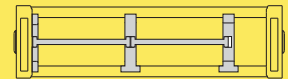
*Available on request in stainless steel
** 1=Pos.1; 2=Pos.2; 3=Pos.3
See end brackets mounting variations page 31.

Serie Protection

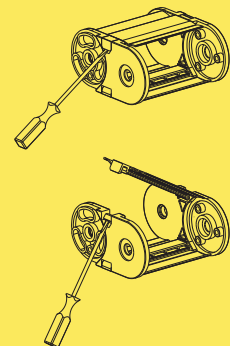
SR475PI

SR475PE

Nylon Protection Cable Chain with openable covers



Separation System
To choose the separators see page. 174



How to open the cover.

For further information please consult Brevetti Stendaito's Technical Office